

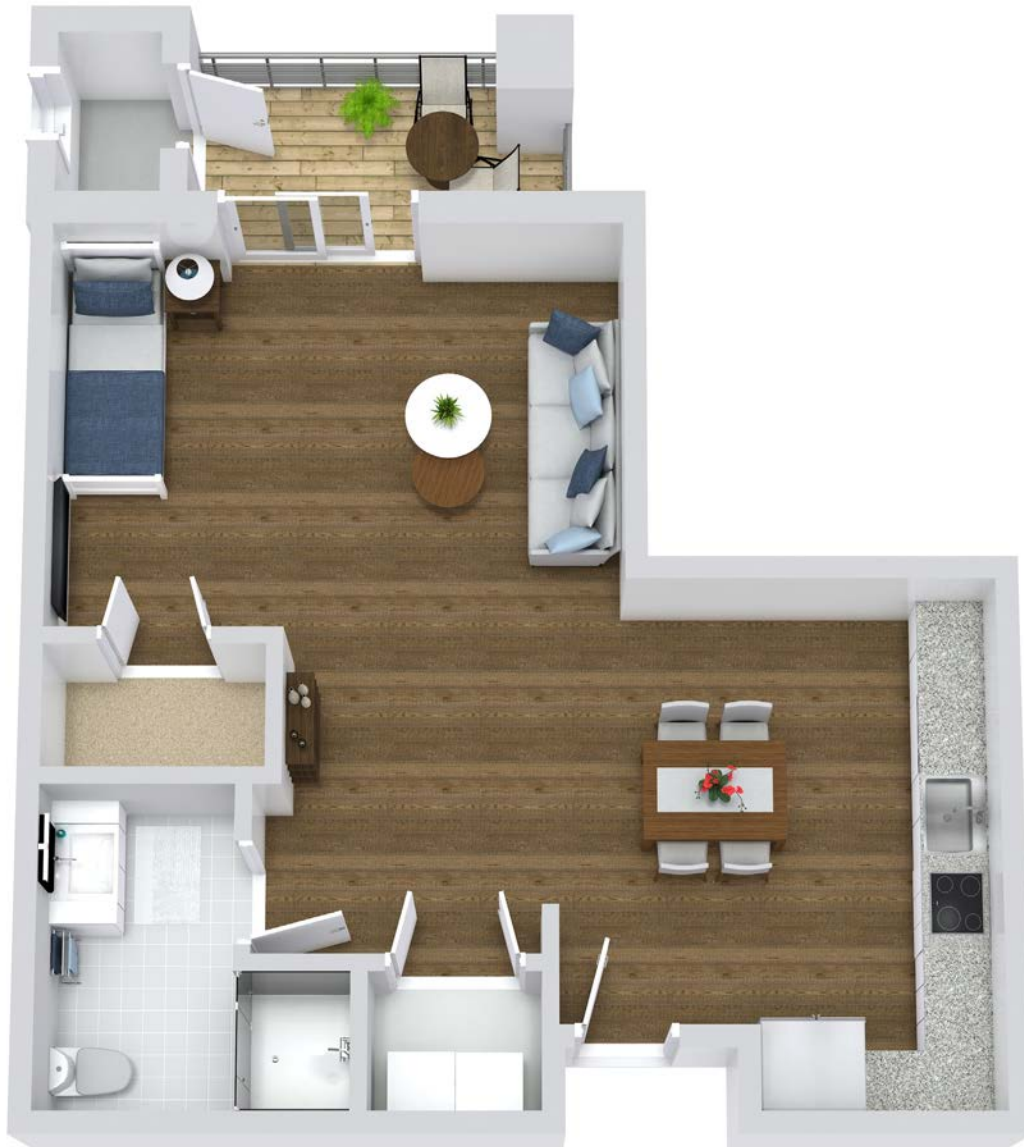


The Phoenix[®]
at Union Hill

A Phoenix Senior Living Community

STUDIO 1.0

Independent Living



*Floor plans shown are representative of a model apartment.
Individual suites may vary in square footage, shape and layout.

Scan Here to
Learn More!



The Phoenix at Union Hill | Independent Living | Assisted Living | Memory Care
9651 Union Hill Rd. | Canton, GA 30115 | (470) 632-4920 | PhoenixSrLiving.com



The Phoenix[®]
at Union Hill

A Phoenix Senior Living Community

ONE BEDROOM 1.0

Independent Living



*Floor plans shown are representative of a model apartment.
Individual suites may vary in square footage, shape and layout.

Scan Here to
Learn More!



The Phoenix at Union Hill | Independent Living | Assisted Living | Memory Care
9651 Union Hill Rd. | Canton, GA 30115 | (470) 632-4920 | PhoenixSrLiving.com



The Phoenix[®]
at Union Hill

A Phoenix Senior Living Community

ONE BEDROOM 1.1

Independent Living



*Floor plans shown are representative of a model apartment.
Individual suites may vary in square footage, shape and layout.

Scan Here to
Learn More!



The Phoenix at Union Hill | Independent Living | Assisted Living | Memory Care
9651 Union Hill Rd. | Canton, GA 30115 | (470) 632-4920 | PhoenixSrLiving.com



The Phoenix[®]
at Union Hill

A Phoenix Senior Living Community

ONE BEDROOM 1.2

Independent Living



*Floor plans shown are representative of a model apartment.
Individual suites may vary in square footage, shape and layout.

Scan Here to
Learn More!



The Phoenix at Union Hill | Independent Living | Assisted Living | Memory Care
9651 Union Hill Rd. | Canton, GA 30115 | (470) 632-4920 | PhoenixSrLiving.com



The Phoenix[®]
at Union Hill

A Phoenix Senior Living Community

TWO BEDROOM 2.0

Independent Living



*Floor plans shown are representative of a model apartment.
Individual suites may vary in square footage, shape and layout.

Scan Here to
Learn More!



The Phoenix at Union Hill | Independent Living | Assisted Living | Memory Care
9651 Union Hill Rd. | Canton, GA 30115 | (470) 632-4920 | PhoenixSrLiving.com



The Phoenix[®]
at Union Hill

A Phoenix Senior Living Community

ONE BEDROOM 1.0

Assisted Living



*Floor plans shown are representative of a model apartment.
Individual suites may vary in square footage, shape and layout.

Scan Here to
Learn More!



The Phoenix at Union Hill | Independent Living | Assisted Living | Memory Care
9651 Union Hill Rd. | Canton, GA 30115 | (470) 632-4920 | PhoenixSrLiving.com

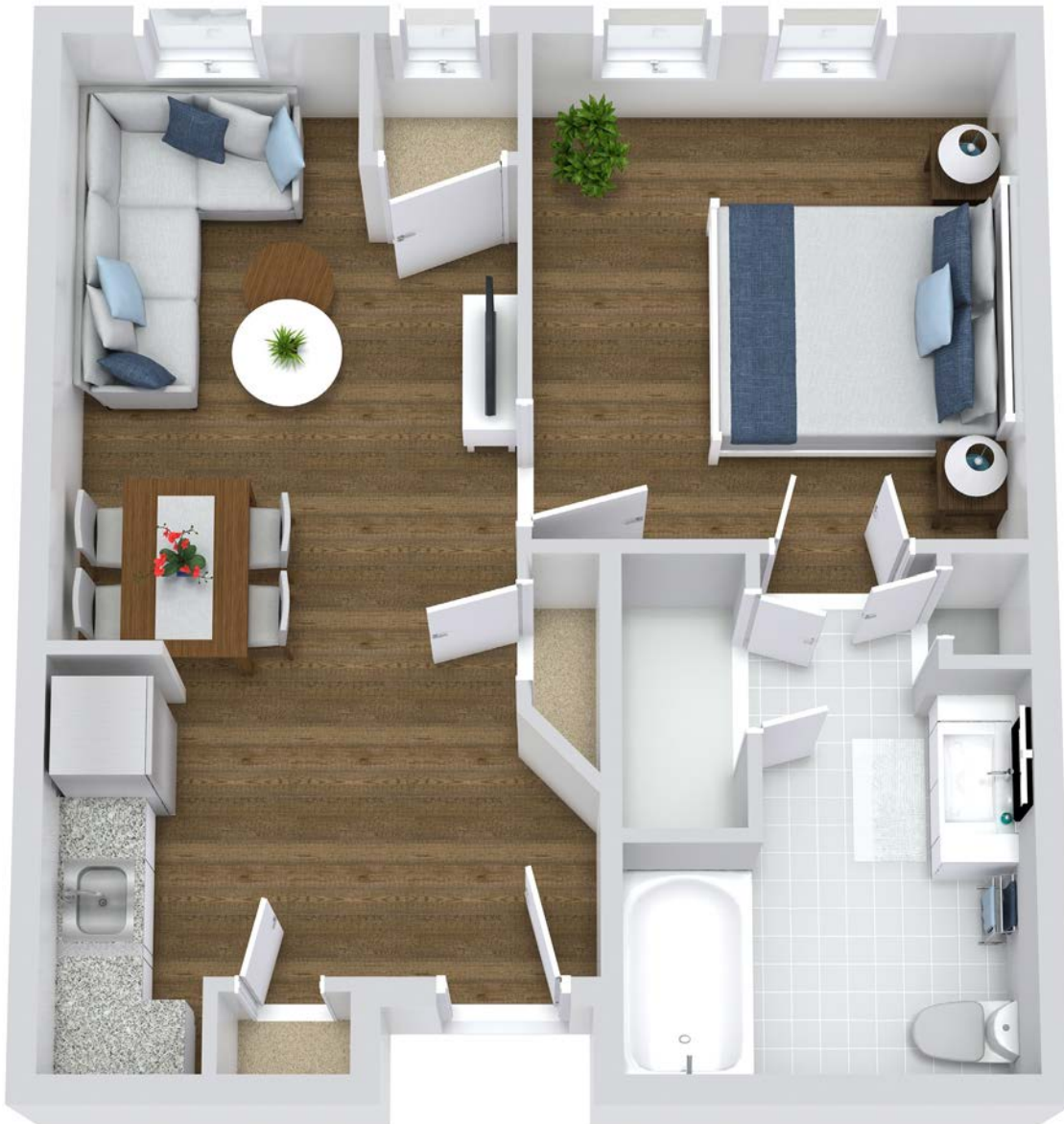


The Phoenix[®]
at Union Hill

A Phoenix Senior Living Community

ONE BEDROOM 1.1

Assisted Living



*Floor plans shown are representative of a model apartment.
Individual suites may vary in square footage, shape and layout.

Scan Here to
Learn More!



The Phoenix at Union Hill | Independent Living | Assisted Living | Memory Care
9651 Union Hill Rd. | Canton, GA 30115 | (470) 632-4920 | PhoenixSrLiving.com

TWO BEDROOM 2.0

Assisted Living



*Floor plans shown are representative of a model apartment.
Individual suites may vary in square footage, shape and layout.

Scan Here to
Learn More!



The Phoenix at Union Hill | Independent Living | Assisted Living | Memory Care
9651 Union Hill Rd. | Canton, GA 30115 | (470) 632-4920 | PhoenixSrLiving.com



The Phoenix[®]
at Union Hill

A Phoenix Senior Living Community

TWO BEDROOM 2.1

Assisted Living



*Floor plans shown are representative of a model apartment.
Individual suites may vary in square footage, shape and layout.

Scan Here to
Learn More!



The Phoenix at Union Hill | Independent Living | Assisted Living | Memory Care
9651 Union Hill Rd. | Canton, GA 30115 | (470) 632-4920 | PhoenixSrLiving.com

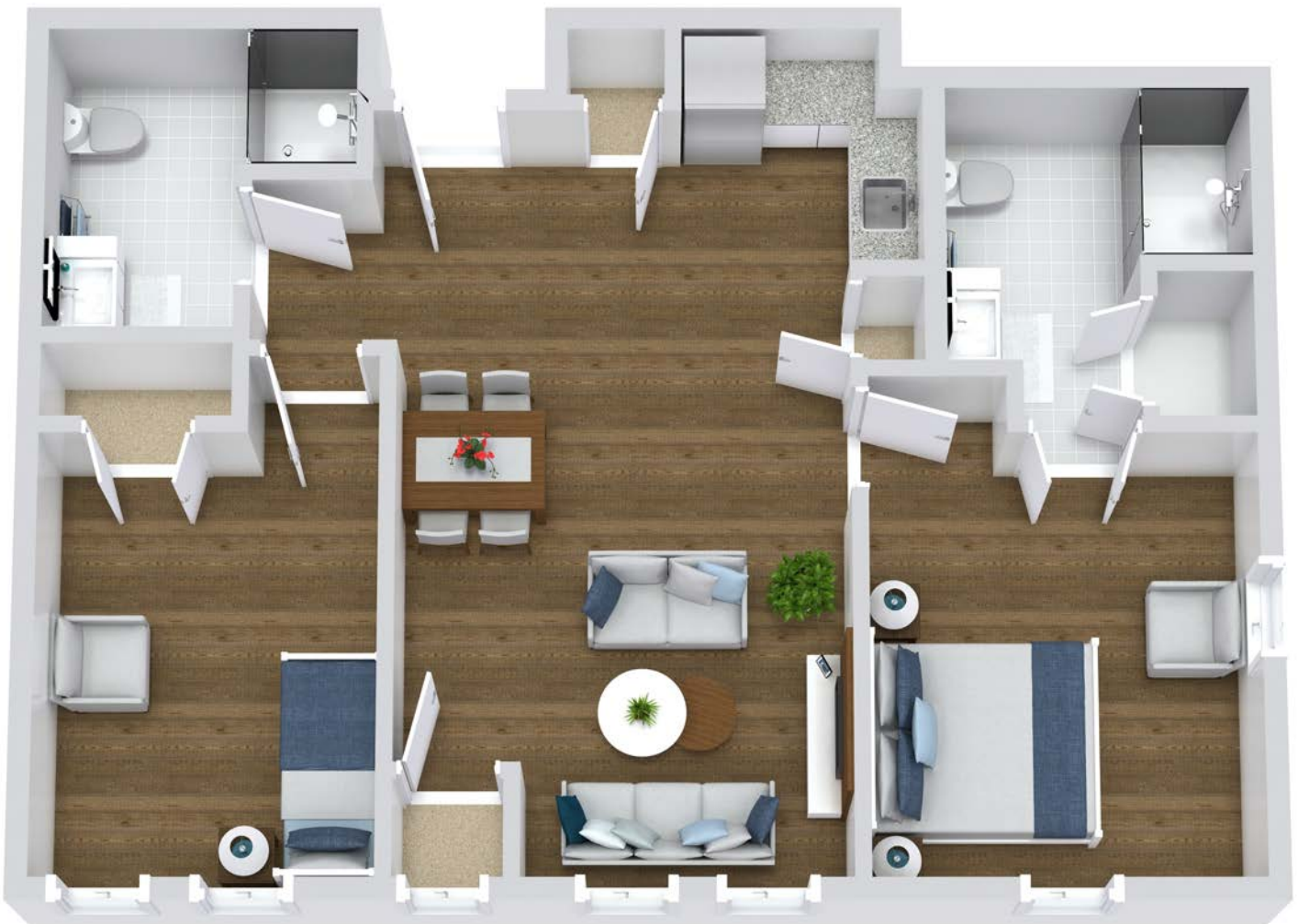


The Phoenix[®]
at Union Hill

A Phoenix Senior Living Community

TWO BEDROOM 2.2

Assisted Living



*Floor plans shown are representative of a model apartment.
Individual suites may vary in square footage, shape and layout.

Scan Here to
Learn More!



The Phoenix at Union Hill | Independent Living | Assisted Living | Memory Care
9651 Union Hill Rd. | Canton, GA 30115 | (470) 632-4920 | PhoenixSrLiving.com



The Phoenix[®]
at Union Hill

A Phoenix Senior Living Community

TWO BEDROOM 2.3

Assisted Living



*Floor plans shown are representative of a model apartment.
Individual suites may vary in square footage, shape and layout.

Scan Here to
Learn More!



The Phoenix at Union Hill | Independent Living | Assisted Living | Memory Care
9651 Union Hill Rd. | Canton, GA 30115 | (470) 632-4920 | PhoenixSrLiving.com



The Phoenix[®]
at Union Hill

A Phoenix Senior Living Community

PEARL STUDIO

Memory Care



*Floor plans shown are representative of a model apartment.
Individual suites may vary in square footage, shape and layout.

Scan Here to
Learn More!



The Phoenix at Union Hill | Independent Living | Assisted Living | Memory Care
9651 Union Hill Rd. | Canton, GA 30115 | (470) 632-4920 | PhoenixSrLiving.com



The Phoenix[®]
at Union Hill

A Phoenix Senior Living Community

PEARL ONE BEDROOM

Memory Care



*Floor plans shown are representative of a model apartment.
Individual suites may vary in square footage, shape and layout.

Scan Here to
Learn More!



The Phoenix at Union Hill | Independent Living | Assisted Living | Memory Care
9651 Union Hill Rd. | Canton, GA 30115 | (470) 632-4920 | PhoenixSrLiving.com